



This summary report for 2023-2024 for parents/carers and partners outlines our priorities and achievements last session together with our priorities for next session. Through our processes of self-evaluation including the views of our pupils, parents and partners, school data and monitoring of learners' experiences, we have identified how we can improve outcomes for our children, young people and families. The next steps outlined at the end of the report will be incorporated into our planning for 2024-2025

St. Clare's Primary School



St. Clare's is part of the St. Thomas Aquinas Learning Community, although most P7 pupils transfer to St. Peter the Apostle, West Dunbartonshire due to location of St. Clare's/

The school campus is shared with the Drumchapel Family Learning Centre and St. Clare's Out of School Care Service. The school's capacity is 330.

Our current roll is 272, arranged in 11 classes – currently 8 single classes and 3 composite classes. Several of our children across the school attend our nurture intervention in the 'Forest Den'.

Several of our children across the school access our Sensory room.

Our achievements and improvements: 2023-24

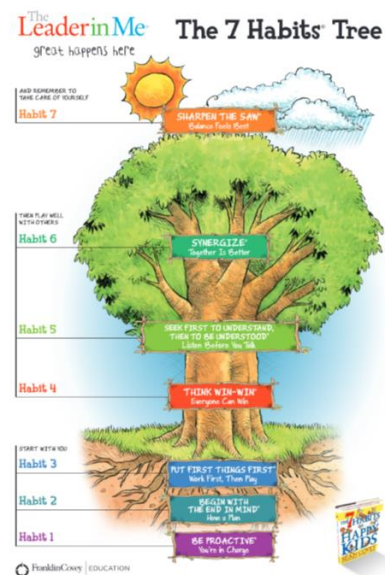
1. Key developments

Last session we started our Journey towards the Language and Communication Friendly School Award. A safe space, emotional check-ins and visual timetables are implemented in every classroom to support learners. This consistent practice is leading to improved nurturing practices across whole school strengthening relationships and meeting needs of individuals.

Everyone is a leader in St. Clare's.

Just like a tree, leadership begins with our personal roots of effectiveness, this is a visual reminder of the Habits.

Leader in Me class assemblies were well attended by parents.



2. Developments in learning, teaching and assessment

Teacher Learning Communities [TLCs] are meetings where teachers work together to improve learning and teaching through research, continuous professional development and collaboration.

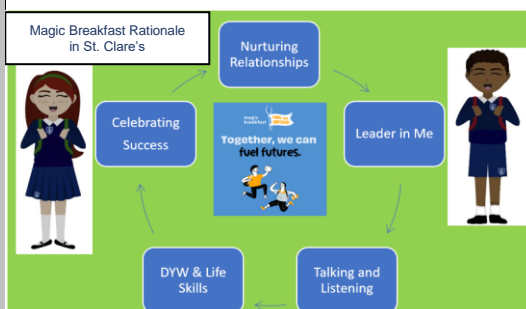
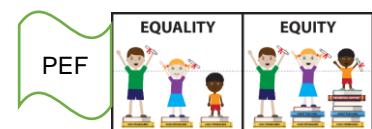
All teaching staff engage in collaborative planning. Improved collaboration is leading to focused, progressive learning and engaging lessons in every class in most lessons.

Our consistent approach to the delivery of Religious Education Roman Catholic across the school has been a focus. Teacher confidence has increased as a result of professional training in Sacramental preparation.

3. Progress in promoting well-being, equality and inclusion

All of St. Clare's staff and partners have a clear understanding of the social, economic and cultural context of St. Clare's. There is a strong focus on children's wellbeing, learning and relationships across the school and all children experience positive, nurturing relationships within the Catholic ethos and practices of St. Clare's.

Pupil Equity Fund is used to fund universal and targeted supports, additional staff and resources across whole school driving forward national improvement priorities.



PEF has enabled St. Clare's to purchase Magic Breakfast ensuring that all learners in St. Clare's can access breakfast every morning in school if they wish to, to support their health and well-being as well as engagement in learning. INEOS funding continues to facilitate musical instrument tuition for Second Level pupils. Parent Council support schoolwork and events across the school year in line with Cost of the school day principles.

Nurture class sessions continue to support individuals with social and emotional development ensuring skills are developed both in the mainstream classes and smaller setting of the Forest Den. Glasgow's Motivation and Wellbeing Profile assessments identify class targets and personal targets for individual learners ensuring achievement of personal growth is supported by staff. All staff engaged in Outdoor Learning/Nature Activities which increased opportunities for learners, particularly pupils at risk of non-engagement in school.

St. Clare's offered parents a variety of opportunities to be involved in the life and work of the school including various Family learning events such as the Digital Online Safety sessions which provided vital safeguarding information. Outdoor Family Learning opportunities increased and were very popular. Places at Cook Play Grow sessions were secured quickly, continuing family learning support and building of relationships.

Regular attendance at school and taking part in learning, is fundamental to making sure that our young people become **Successful Learners, Confident Individuals, Effective Contributors and Responsible Citizens**. Attendance has increased back up to 90% but we continue to focus on further improvements here to try and get back to pre-Covid figures. Announcements in school for class 'full houses' means that full class attendance each day is celebrated if achieved. Class attendance data is included in parent newsletters.



St. Clare's along with the other 5 local Drumchapel schools were invited to take part in a **Community Cultural Celebration** called **Generating Hope!** Each school prepared a song that stimulates hope resulting in a concert. This event took place in the community centre, helping to revive the Lomond Hall structure for the community! The event was recorded for Drumchapel TV by the local group G15.

4. Progress in children's learning /raising attainment and recognising achievement

Overall attainment and progress in Literacy & Numeracy is very good. Most learners [P1, P4 and P7 combined] are achieving CfE expected levels across core areas and almost all learners are making expected progress.

Additional teaching staff funded by Pupil Equity Fund have enabled targeted additional support for learners at P1 across literacy and numeracy resulting in further closing of learning gaps enabling achievement of planned outcomes. Our specific focus at early level [P1] resulted in attainment outcomes from our school improvement priorities being overtaken and a significant increase of 10%+ was achieved across writing and numeracy.

A dedicated focus on regular timetabled guided reading sessions has had a significant impact. Most stages across the school have increased the number of pupils reading at or above the appropriate PM benchmark reading band.

All learners are developing their skills across the five capacities including 'Faithful Disciple' category.

A Wider achievement Award system recognises and celebrates learners' achievements throughout the session where learners progressively achieve Bronze, Silver & Gold awards. Participation in Wider achievement awards, Class led assemblies and Class Councils has significantly increased pupil voice and participation across all classes.



School and pupil achievements are celebrated via Twitter and school website.

All pupils in P1, P2, P4/3, P7 achieved all 3 Wider Achievement School Awards. [Bronze, Silver & Gold]

Almost all pupils in P2/1, P3, P4, P5, P6/5, P6 achieved all 3 Wider Achievement School Awards. [Bronze, Silver & Gold]

The average success rate across the school for Wider Achievement is 92%.

Our P4-P7 staff and learners creatively used the theme of our School Values of Love, Learning, Friendship Faith and Respect in our end of year show, to apply skills learned across expressive arts and technologies.

Together with green screen graphics, techies behind the scenes and props to ensure the show ran smoothly we ended, yet another year very successfully!



Here is what we plan to improve next year.

Priorities for development:

1: Well-being and Learning:

- Continue to improve attendance

2: Achievement & Progress:

- Continue to raise attainment across core areas

- Learning Community Focus on improving reading skills

3: Engagement, Participation & Inclusion:

- Creative use of environments/displays to inspire/motivate learners and support regulation of learners.
- Continue journey towards gaining full accreditation for being a Language and Communication Friendly Establishment. [LCFE]

How can you find out more information about our school?

The contact e-mail address is: headteacher@st-claresdrumchapel-pri.glasgow.sch.uk

Our telephone number is: 0141-944-2554

Our school address is: 15 Kilcloy Avenue, Drumchapel, G15 8RP

Further information is available in: newsletters, school handbook and the school website.

<http://www.st-claresdrumchapel-pri.glasgow.sch.uk/>