

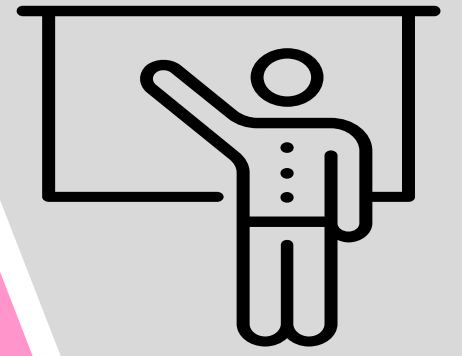


St. Charles' Primary & LCR

Standards and Quality Report Session 2020/2021

Return to School

Pupils and staff had a positive return to school successfully overcoming challenges to enjoy high quality learning experiences.



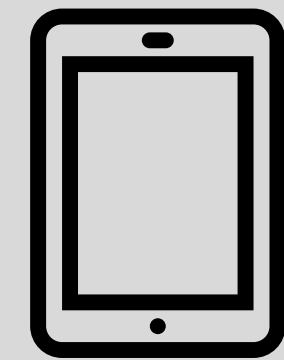
Health and Wellbeing

12 members of staff completed Place2Be Mental Health Champions training.



Digital Learning

Staff continued to develop the use of Seesaw as a digital platform to engage and inform parents and share children's learning.



Leadership

Three Principal Teachers completed Postgraduate Diplomas to empower them to take forward our school priorities.



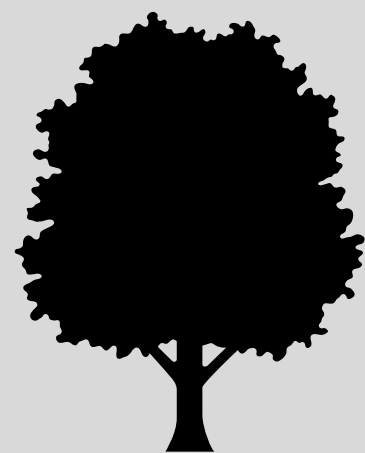
Leadership

We continued to embed the Leader in Me 7 Habits, promoting highly motivated leadership at all levels of our school community.



Outdoor Learning

Our children benefitted from daily Outdoor Learning experiences on school grounds and in the local community.



Outdoor Learning

A progressive and challenging Outdoor Learning Framework was devised which was piloted by staff in the final term.

